






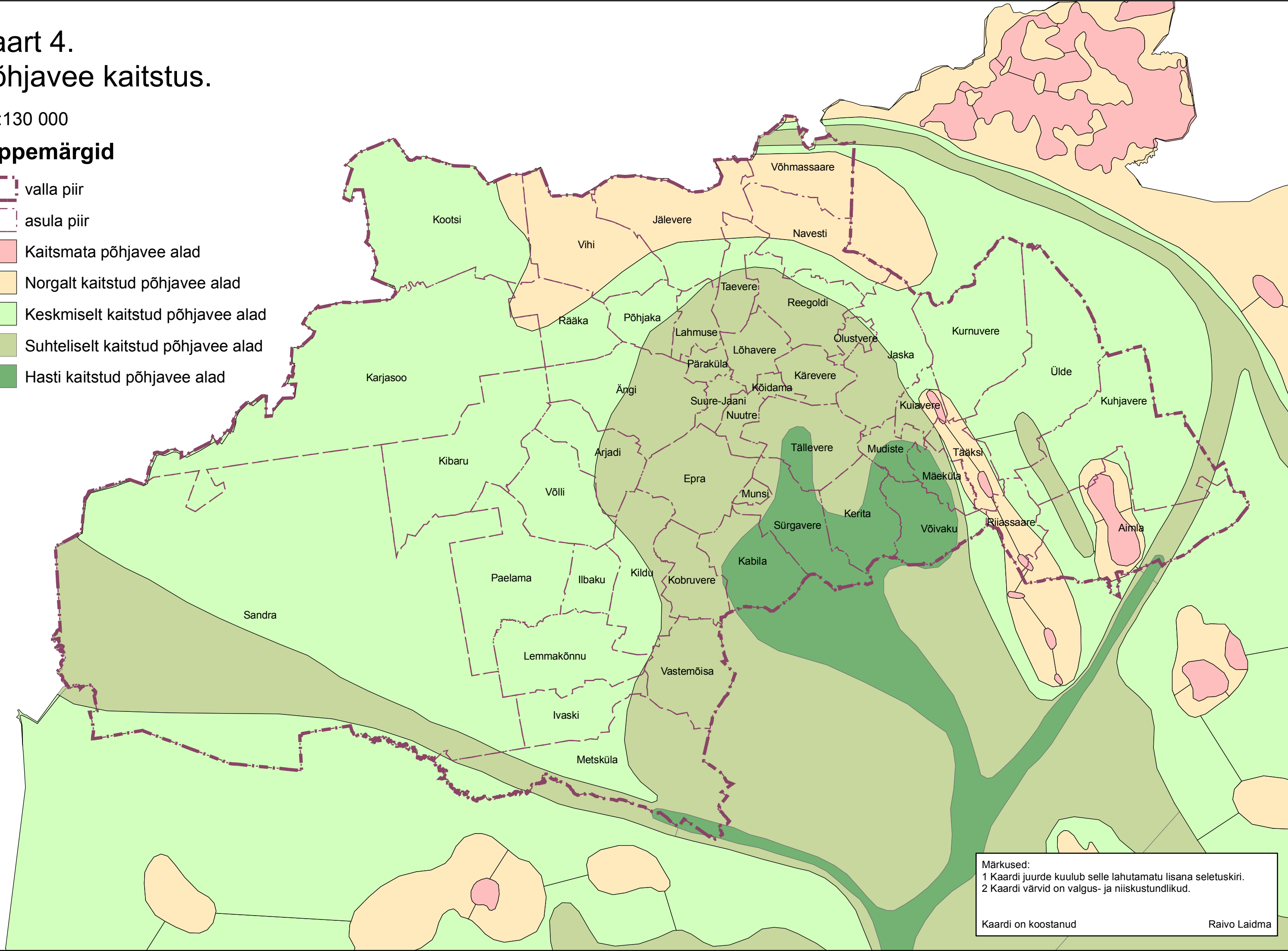


# Kaart 4. Põhjavee kaitstus.

M1:130 000

## Leppemärgid

-  valla piir
-  asula piir
-  Kaitsmata põhjavee alad
-  Norgalt kaitstud põhjavee alad
-  Keskmiselt kaitstud põhjavee alad
-  Suhteliselt kaitstud põhjavee alad
-  Hasti kaitstud põhjavee alad



Märkused:  
 1 Kaardi juurde kuulub selle lahutamatu lisana seletuskiri.  
 2 Kaardi värvid on valgus- ja niiskustundlikud.

Kaardi on koostanud Raivo Laidma